

**THE CORPORATION OF THE MUNICIPALITY OF POWASSAN
(Harman)**

BY-LAW NO. 2020-25

Being a By-law to amend By-law No. 2003-38, as amended, the Zoning By-law for the Municipality of Powassan with respect to lands located in Concession 5, Part Lot 24, Pcl 2214 (Himsworth) (140 Hummel Line), in the Municipality of Powassan.

WHEREAS the Council of the Corporation of the Municipality of Powassan is empowered to pass By-laws to regulate the use of land pursuant to Section 34 of the Planning Act, 1990;

AND WHEREAS the owners of the subject lands have filed an application with the Municipality of Powassan to amend By-law No. 2003-38, as amended;

AND WHEREAS the Council of the Corporation of the Municipality of Powassan deems it advisable to amend By-Law 2003-38, as amended;

NOW THEREFORE the Council of the Corporation of the Municipality of Powassan enacts as follows:

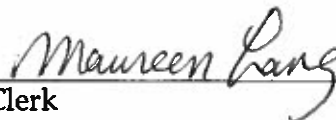
1. Schedule 'A', to Zoning By-law No. 2003-38 as amended, is further amended by zoning lands located in Concession 5, Part Lot 24, Pcl 2214 (Himsworth) (140 Hummel Line), in the Municipality of Powassan. from the "Rural (Ru)" Zone to a "Rural Exception (RU-15)" Zone, as shown on Schedule A-1 attached hereto and forming part of this By-law.
2. Notwithstanding Sections 3.5 and 4.4.1, no more than two dwelling are permitted on lands located in Ru-15 Zone.
3. This By-law shall come into effect upon the date of passage hereof, subject to the provisions of Section 34 (30) and (31) of the Planning Act (Ontario).

READ A FIRST AND SECOND TIME on the 1st day of September, 2020

READ A THIRD TIME and finally passed this 15th day of September, 2020



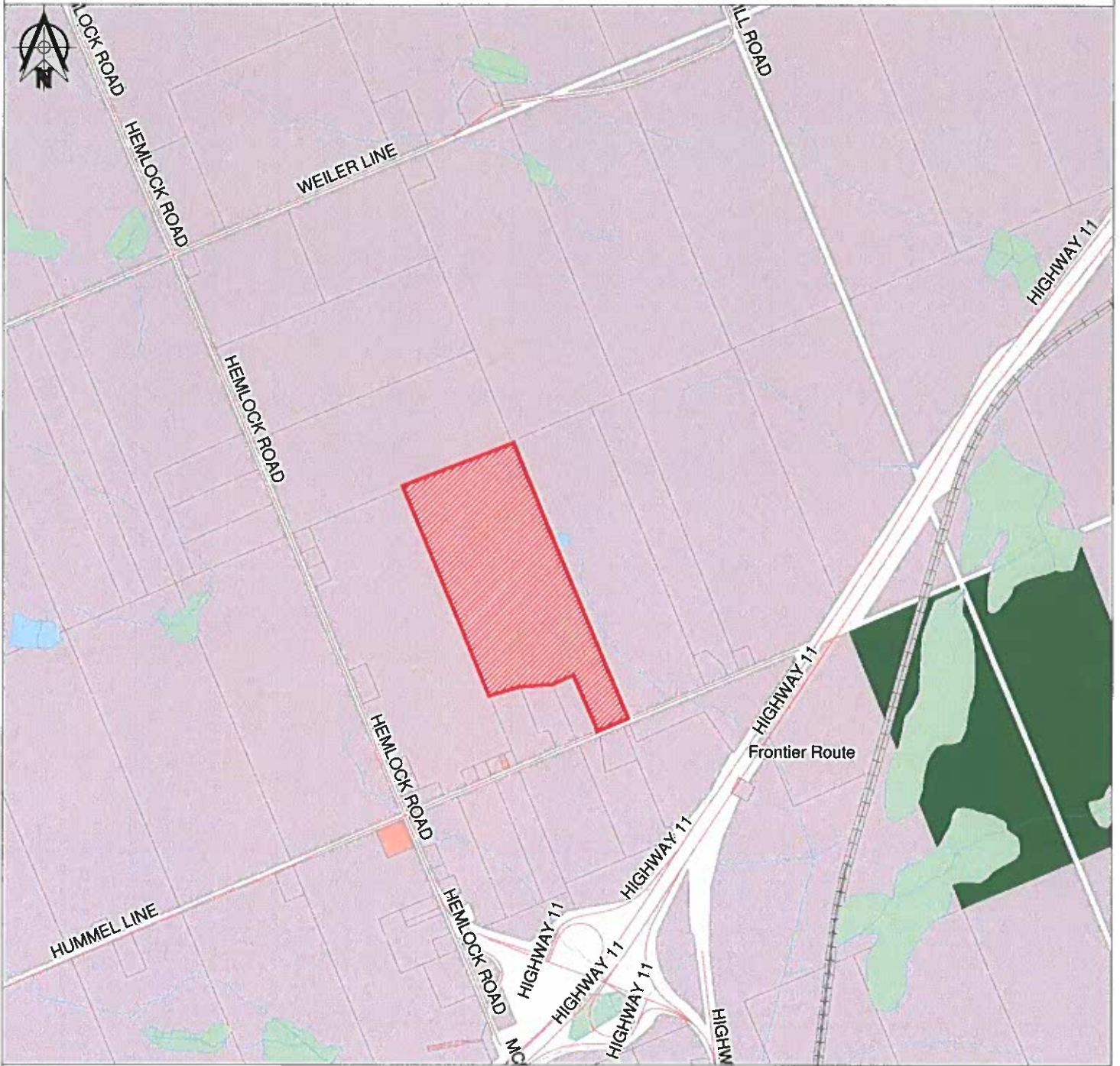
Mayor



Clerk


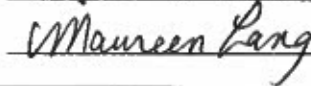
SCHEDULE 'A' TO
ZONING BY-LAW 2020-25

140 HUMMEL LINE
PART OF LOT 24, CONCESSION 5 PCL 2214
GEOGRAPHIC TOWNSHIP OF HIMSWORTH
MUNICIPALITY OF POWASSAN
DISTRICT OF PARRY SOUND



 LANDS TO BE REZONED FROM RU (RURAL)
TO RU-XX (RURAL with an EXCEPTION)

THIS IS SCHEDULE 'A' TO ZONING BY-LAW 2020-25
PASSED THIS 15 DAY OF SEP, 2020


MAYOR

CLERK

THIS DRAWING IS FOR ILLUSTRATION PURPOSES ONLY.
FOR EXACT BOUNDARY INTERPRETATIONS,
PLEASE CONTACT THE MUNICIPALITY OF POWASSAN